

A. Krasotov

А. КРАСОТОВ

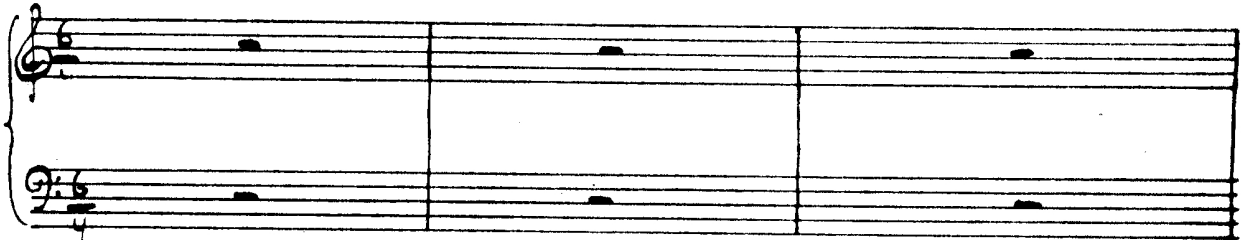
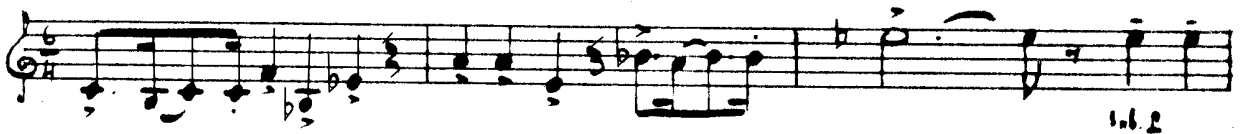
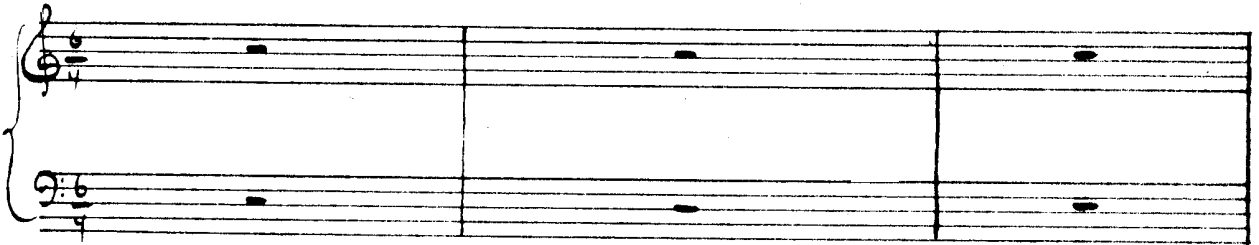
MARCATTO

Concert piece for trumpet Bb & piano

(КОНЦЕРТНАЯ ПЬЕСА ДЛЯ ТРУБЫ И Ф-НО)

Marcatto risoluto ♩ = 144

Solo



V. S.

Blank musical staff

Blank musical staff

1

Handwritten musical score for a piano piece, consisting of eight systems of staves. The first system includes a treble clef staff with a triplet of eighth notes and a first ending bracket. The second system is a grand staff with piano markings. The third system is a single treble clef staff. The fourth system is a grand staff with piano markings. The fifth system is a single treble clef staff. The sixth system is a grand staff with piano markings. The seventh system is a single treble clef staff. The eighth system is a grand staff with piano markings.

2

3

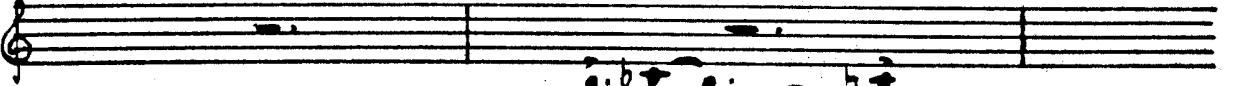
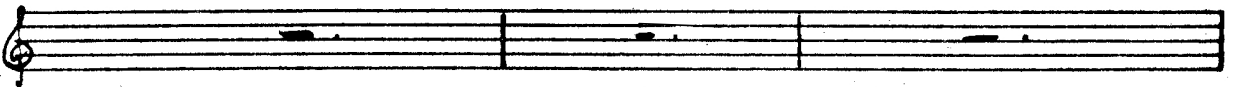
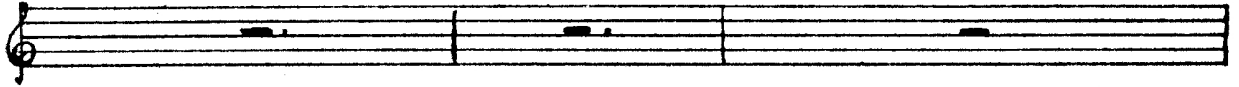
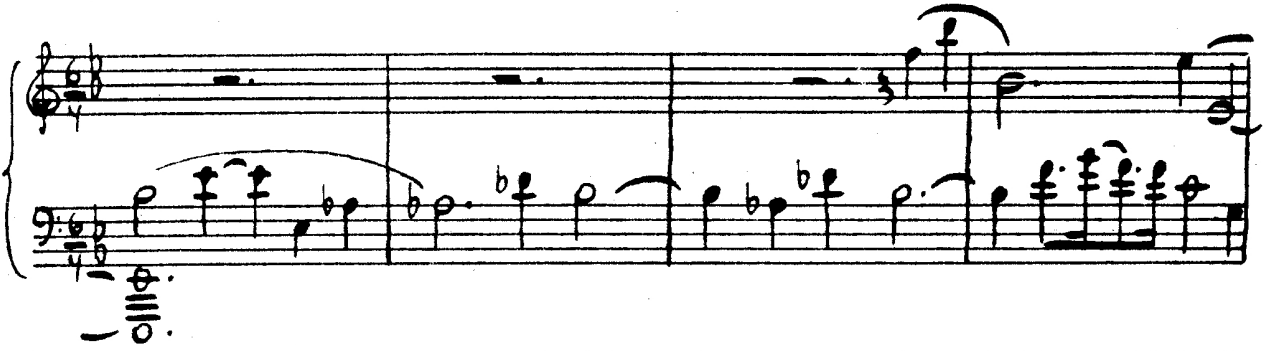
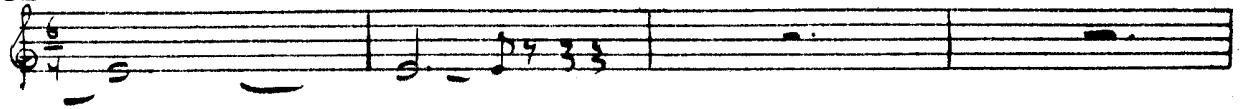
V.S.

Handwritten musical score for piano and voice. The score is written on six systems of staves. The top system shows a vocal line with a triplet of eighth notes marked with a circled '3'. Below it, the piano accompaniment begins with a dynamic marking of *sub. p* and a slur. The second system continues the piano accompaniment with complex, dense chords and textures. The third system shows the vocal line with a long rest, followed by the piano accompaniment. The fourth system continues the piano accompaniment with complex textures. The fifth system shows the vocal line with a long rest, followed by the piano accompaniment. The sixth system continues the piano accompaniment with complex textures. The score includes various musical notations such as notes, rests, slurs, and dynamic markings.

A handwritten musical score consisting of eight systems. The first system features a vocal line in treble clef with a box containing the number '4' above it, and a piano accompaniment in grand staff. The piano part includes triplets and dynamic markings such as 'p' and 'sf'. The second system continues the piano accompaniment with complex chordal textures. The third system shows a vocal line with a melodic line and a piano accompaniment. The fourth system is a piano accompaniment system with dense chordal patterns. The fifth system features a vocal line with a long, sweeping melodic line. The sixth system is a piano accompaniment system with intricate chordal work. The seventh system shows a vocal line with a melodic line and a piano accompaniment. The eighth system is a piano accompaniment system with dense chordal patterns. The score is written in a single key signature with a common time signature.

This image shows a handwritten musical score for piano and voice. The score is written on ten staves, organized into five systems of two staves each. The top staff of each system is a vocal line, and the bottom staff is a piano accompaniment. The music is written in a key signature of one flat (B-flat major or D minor) and a 3/4 time signature. The piano accompaniment features a complex, flowing melody in the right hand and a more rhythmic bass line in the left hand. The vocal line consists of a single melodic line with various note values and rests. The score includes various musical notations such as notes, rests, slurs, and dynamics. The dynamics include *pp* (pianissimo) at the beginning of the piano accompaniment in the fourth system. The score is written in black ink on white paper.

5



Handwritten musical notation symbol.

7

Musical score system 1, featuring a vocal line and piano accompaniment. The vocal line begins with a piano (*p*) dynamic. The piano accompaniment includes dynamics such as *mf*, *ff*, and *mf*. The system contains two staves for the piano and one staff for the vocal line.

Musical score system 2, continuing the vocal and piano parts. The piano accompaniment features a prominent chord marked with a box containing the number 7. Dynamics include *mf* and *ff*. The system contains two staves for the piano and one staff for the vocal line.

Musical score system 3, showing the vocal line and piano accompaniment. The piano accompaniment is characterized by dense, repeated chordal patterns. Dynamics include *mf* and *ff*. The system contains two staves for the piano and one staff for the vocal line.

Musical score system 4, the final system on the page, featuring the vocal line and piano accompaniment. The piano accompaniment continues with dense, repeated chordal patterns. Dynamics include *mf* and *ff*. The system contains two staves for the piano and one staff for the vocal line.

8

The image displays a musical score for piano and voice, consisting of eight systems of staves. The notation includes treble and bass clefs, various note values, rests, and dynamic markings. A circled number '9' is present in the first system. The word 'crescendo poco a poco' is written across the third system. The score concludes with a double bar line and a fermata over the final notes.

Marcatto

Concert piece for trumpet & piano

A. Krasotov

Marcatto risoluto ♩ = 144

4

7

11

15

18

22

26

30

f

sub.p

sf

sub.p

sub.p

sf

1

1

2

3

3

3

3

33 **10** **4**
p

47

53

59 **5**
pp

65 **8** **6** **2**
p

77 **1**
mp *mf*

80 **7**
f

85 **8**

90 *f*

96

101 9

p *cresc. poco a poco*

Detailed description: This staff contains measures 101 through 104. It begins with a treble clef and a key signature of one sharp (F#). Measure 101 starts with a whole rest, followed by a quarter note G4, an eighth note A4, and a sixteenth note B4. A slur covers measures 101-104. Measure 102 has a quarter note C5, an eighth note D5, and a sixteenth note E5. Measure 103 has a quarter note F#5, an eighth note G5, and a sixteenth note A5. Measure 104 has a quarter note B5, an eighth note C6, and a sixteenth note D6. Dynamics include *p* at the start and *cresc. poco a poco* written below the staff.

105

Detailed description: This staff contains measures 105 and 106. It starts with a treble clef and a key signature of one flat (Bb). Measure 105 has a quarter note Bb4, an eighth note C5, and a sixteenth note D5. Measure 106 has a quarter note E5, an eighth note F5, and a sixteenth note G5. Slurs are present over measures 105-106 and 106-107. Fingerings 5 and 7 are indicated below the notes in measure 106.

107

ff *3*

Detailed description: This staff contains measures 107 and 108. It starts with a treble clef and a key signature of one flat (Bb). Measure 107 has a quarter note Bb4, an eighth note C5, and a sixteenth note D5. Measure 108 has a quarter note E5, an eighth note F5, and a sixteenth note G5. A slur covers measures 107-108. A triplet of eighth notes (E5, F5, G5) is marked with a '3' below it. The dynamic *ff* is written below the staff. The piece ends with a double bar line.